

# SMV 10-16 Generation B



## A modern generation

**G**eneration B is a newly designed series of forklift trucks that sets a new standard in reliability and productivity.

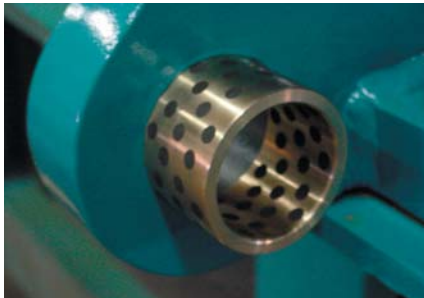
A string of improvements that include a new driveline and upgraded hydraulics gives these versatile lift trucks unbeatable performance. These features, combined with several maintenance-free solutions and an extended service interval of 500 hours, have enabled us to minimize downtime while also reducing lifecycle costs even further.

Generation B is designed to keep on performing under demanding conditions year after year. We have therefore also equipped these lift trucks with a newly designed cab that meets the stiffest conceivable requirements for visibility, ergonomic design and comfort. Another detail that will be appreciated by drivers is the smart monitoring system that gives clear information about important functions.

# SMV 10-16 Generation B



Get the Job Done



## Graphite bushing on the mast fixation

- Less maintenance
- Lower LCC
- Less downtime



## New cab

- Stronger
- Better visibility
- Better ergonomics
- More comfortable



## New engine hood

- Better visibility backwards
- Increased maintenance accessibility



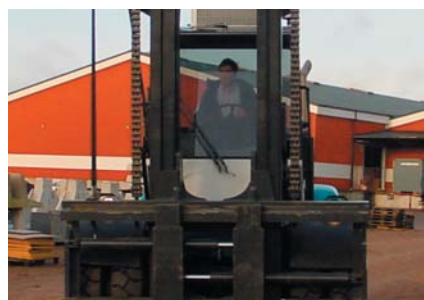
## Transmission

- DANA Transmission
- Stepless automatic gearshift as standard
- Stronger
- Smoother driving
- More comfortable



## New display

- Water and dust proof instruments and switches
- Smart monitoring system as standard
- Gives the driver and the service people good control
- LED's instead of lamps in the switches



## Updated lifting equipment

- New upper cross member
- New lower cross member
- Maintenance free bearings and bushing
- Prepared for larger tilt

## Technical data

### Attachments

SMV is offering a range of various attachments, integrated in the mast or attached onto the fork shaft system, for example:

- Coil booms
- Inverted forks
- Fork mounted container attachments

### Options

SMV offers a number of value adding options such as:

- Air conditioning
- Monitoring system
- Alternative engines
- Joystick steering
- Fork shaft system
- 180 deg rotating drivers seat
- Electric machine control systems with 6.5" colour display
- Exhaust cleaning systems

### Service and maintenance

In order to reduce maintenance costs over the life of the machine, service intervals have been increased from every 250 operating hours to every 500 hours. The longer service intervals have been achieved by using maintenance- and lubrication-free bearings and graphite bushings in the mast and carriage. In addition, the forks are now equipped with the latest plastic glide plates, and lubrication-free teflon link-bearings have been incorporated in the cylinders.



### EMC test

## SMV KONECRANES AB

Box 103  
SE-285 23 Markaryd  
SWEDEN

Phone  
+46 433 73 300

Fax  
+46 433 73 310

[www.smliftrucks.se](http://www.smliftrucks.se)

E-mail  
[info@smliftrucks.se](mailto:info@smliftrucks.se)

Part of KONECRANES